

# API Beige Sandstone

High quality natural sandstone for architectural masonry, cladding and paving





# API BEIGE SANDSTONE

**API Beige is a select sandstone which is the sandstone of preference for many architects, contractors and masonry companies throughout the UK.**

API Beige has been supplied on many large residential and commercial properties throughout the UK, including prestigious projects such as:

- The Premier Inn hotel in Harrogate.
- The 'New Coach House' in Sandal, Wakefield. Winner of a NHBC award.
- 29 house development in Moortown, Leeds.
- Gore Lane Farm, Alderley Edge, Cheshire.

The stone is extracted in Quintanar de la Sierra in Northern Spain from the same quarry as the more colourful API Vein, and has a long and distinct heritage within Spain. API Beige is the most popular sandstone that API Stone Ltd have within their range.

The striking colouration of API Beige sandstone features a buff/beige base with light reddish veins, which add depth and interest to both traditional and contemporary building designs.

API Beige is specified throughout the UK on a regular basis, as it is a suitable match for many Yorkshire and Derbyshire buff/beige sandstones that are also on the market.

The material is suitable for all ashlar, cladding, architectural and landscape applications in various finishes from honed to bush hammered.

Stock is held in Huddersfield in section sizes 100mm x 100mm, 100mm x 140mm, 150mm x 140mm, 100mm x 215mm in various lengths and 50mm paving in 600mm gauge.

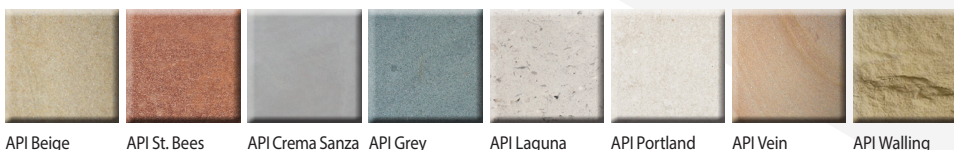
Extensive reserves are readily available and with blocks up to 3500mm long, large pieces are easily cut in one piece.



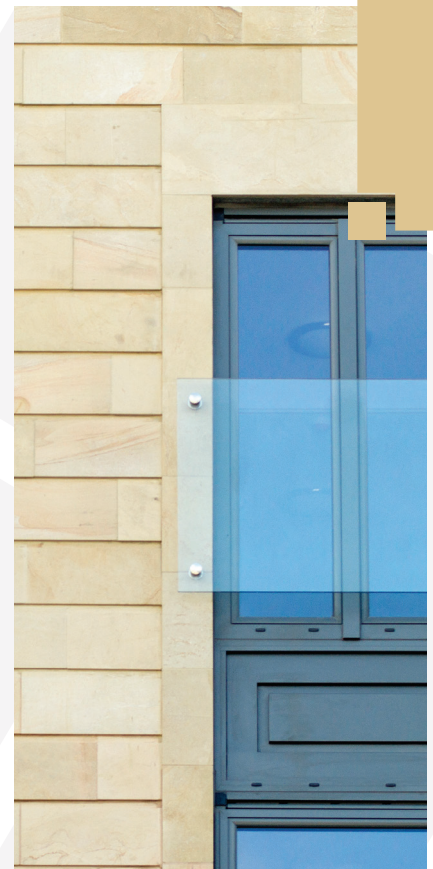
## TECHNICAL DETAILS:

Geographical Type	Sandstone Subarcose
Main Colour	Cream based and Ochre colour
Colour Variations	Reddish veins
Texture	Fine Grain
Availability	Contract up to 100,000 m2
Average Block Size	2500L x 1500W x 1500H (mm)

## ALSO AVAILABLE FROM API STONE:



API Beige    API St. Bees    API Crema Sanza    API Grey    API Laguna    API Portland    API Vein    API Walling



## CASE STUDY

*Premier Inn Hotel  
Harrogate, North Yorkshire*

The Premier Inn was built in the grounds of the Majestic Hotel in the centre of Yorkshire's spa town of Harrogate.

The brief from the Harrogate Planning department was to construct a hotel in line with the existing architecture already seen in the surrounding area.

Working with the main contractors, Russells Construction Limited (Manchester) and in conjunction with the main architects, Howarth Litchfield Partnership (Durham), API Stone Ltd supplied the full construction design of the natural stone package on this project.

For more case studies visit:  
[www.api-stone.com](http://www.api-stone.com)