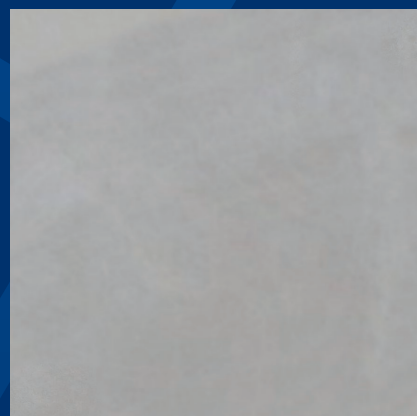


# API Crema Sanza Sandstone

High quality natural sandstone for architectural masonry, cladding and paving





# API CREMA SANZA SANDSTONE

**API Crema Sanza is a unique light grey limestone that offers architects an attractive alternative to the ubiquitous Yorkstone that is specified by many Landscape Architects in the UK and Ireland. The stone is hard wearing and ideal for paving and robust environments.**

One major benefit of API's Crema Sanza is that it can be used in a multitude of formats including cladding, ashlar, paving or walling, similar to that of the hard Irish and North UK Limestones that are available on the market.

**API Crema Sanza has been supplied for many commercial properties throughout Europe and large residential properties in the UK and USA. These include:**

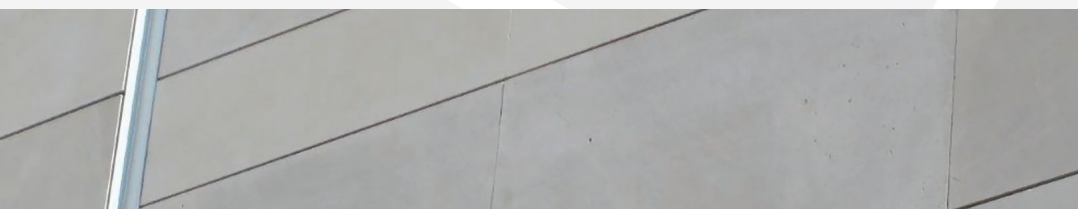
- NHS Care Home near Bilbao.
- Residential House in Miami.
- Large Residential Villa in Alicante.
- Brookwood (Large Residential House), Prestbury, Cheshire.

The limestone is extracted between Zaragoza and the French Border in North East Spain and is proving a popular choice where more of a monotone grey colouration or harder material is required.

API Crema Sanza limestone has a light grey/off white uniform colouration which gives the stone a clinical and natural look. The limestone regularly competes against the lower cost Cumbrian and Irish limestones that are available on the market.

The material is suitable for all ashlar, cladding, architectural and landscape applications in various finishes from honed to bush hammered.

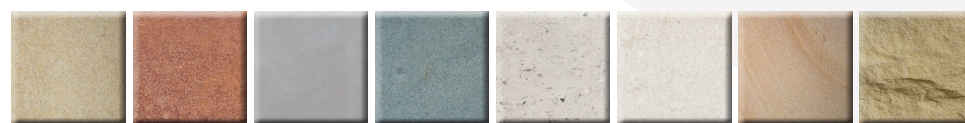
Extensive reserves are readily available and with blocks up to 3500mm long, large pieces are easily cut into one piece.



## TECHNICAL DETAILS:

Geographical Type	Limestone
Main Colour	Light Grey / Off White
Colour Variations	None
Texture	Fine Grain
Availability	Contract up to 100,000 m2
Average Block Size	2500L x 2000W x 1500H (mm)

## ALSO AVAILABLE FROM API STONE:



API Beige

API St. Bees

API Crema Sanza

API Grey

API Laguna

API Portland

API Vein

API Walling



## CASE STUDY

**VASC NHS – Care Home,  
Nr Bilbao**

VASC is a large province in Northern Spain that covers the major cities of San Sebastian, Bilbao and Vitoria. In 2012 VASC made an application to supply natural stone for their version of the UK's NHS. The tender form was long and strenuous but with our contacts in Northern Spain we were able to secure the build of a new care home on the outskirts of the busy port of Bilbao.

The tender document required that the stone should be responsibly and sustainably sourcing and had to be of a monotone colouration and durable to adverse weathering. These qualities automatically put API's Crema Sanza at the top of the list of stones offered on this project.

The stone has a clean and clinical look and was deemed the most suited to any of the stones offered on the project.

Working with the main contractors, Lapatian S.L. in Pontevedra, API Stone Ltd supplied the full supply package for the natural stone element of the tender.