

API Red St. Bees Sandstone

High quality natural sandstone for architectural masonry, cladding and paving



API RED ST. BEES SANDSTONE

API Red St. Bees sandstone is quarried in Cumbria where it forms the sea cliffs of St. Bees Head near Whitehaven.

This distinctive fine grained sandstone has been quarried since the 18th century and is a popular building stone in the UK and USA.

API Red St. Bees has been used throughout the UK from the north of Scotland to the south of England. It is an extremely durable and versatile stone, making it ideal for large scale conservation and high specification projects.

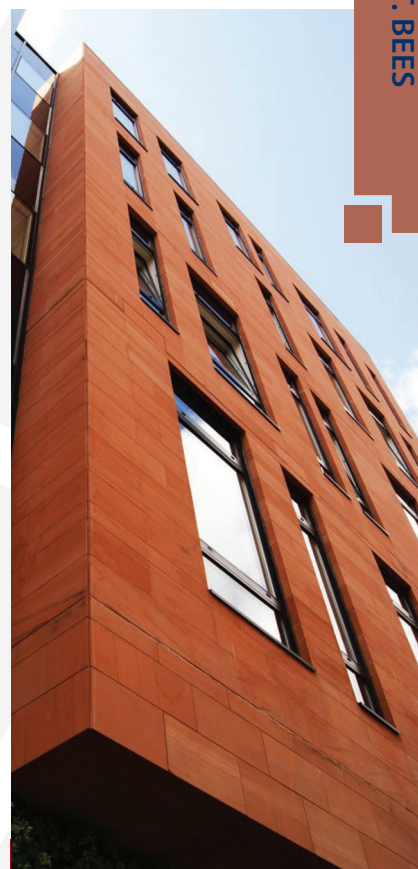
API Red St. Bees has been supplied on large residential and commercial properties throughout UK including projects at:

- Eccles – 4 Tower blocks on the Ladywell Scheme.
- Cheshire – Large private residence at Charcoal Woods, Charcoal Lane.
- Worcestershire – Locks 35, 43 and 45 on the Canal Waterways.

API Red St. Bees is extracted from an environmentally managed quarry and is available in high volumes. It is an ideal natural material for use by the construction industry or for smaller scale private projects.

If red is the choice of colour then API Red St Bees sandstone is the stone to consider. API Stone Ltd have worked with most of the UK red or pink sandstones since our incorporation in 2008. We firmly believe that API Red St. Bees is the best red stone product on the market.

Extensive reserves are readily available.



CASE STUDY

*Office/residential tower blocks
Eccles, Manchester*

Traditional materials in conjunction with modern construction methods have been used in the construction of the tower blocks bringing a more contemporary palette with it.

The three individual tower blocks standing 14-16 storeys high are encapsulated in Red St. Bees sandstone thin natural (30mm thick) cladding on a metal fixing system.

Working with the main contractor Astley Facades the development moved quickly once a locally sourced stone, and one that complemented the existing buildings in the area, was found.

Red sandstone and brick is synonymous with Lancashire/ Manchester/Merseyside and Cumbrian architecture and Red St. Bees soon became the front runner for the project against many of its competitors.



TECHNICAL DETAILS:

Geographical Type	Sandstone
Main Colour	Red
Colour Variations	Black bedding lines visible
Texture	Fine Grain
Availability	Contract up to 10,000 m2
Average Block Size	2500L x 1000W x 1000H (mm)

ALSO AVAILABLE FROM API STONE:

