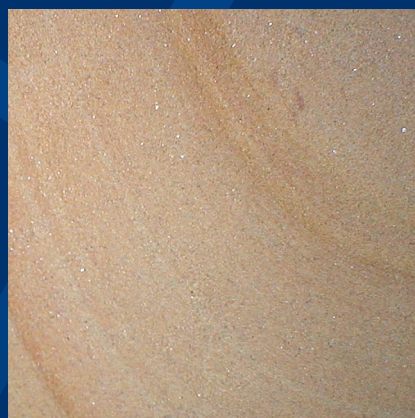


API Vein Sandstone

High quality natural sandstone for architectural masonry, cladding and paving



www.api-stone.com

 **apistone**
the natural stone supply experts

API VEIN SANDSTONE

Quarried in Northern Spain from the same region as API Beige sandstone, API Vein provides the customer an alternative to the normal single colour buff/beige that is seen on many available sandstones.

API Vein has a base colour of beige and contains reddish veins that have been naturally formed by the flow and weave of water that has passed through the stone over millions of years. The sandstone is often chosen by clients that want the buff/beige base colour but also wanting something unusual and different from the norm.

API Vein has been supplied to many large residential and commercial properties throughout the UK, including prestigious projects such as:

- Tesco Extra – Dunfermline.
- The Square Retail Park in Beeston, Nottingham.
- Thompson Farm and Equestrian Centre in Standish, Wigan.
- 25 Hough Lane, Wilmslow.

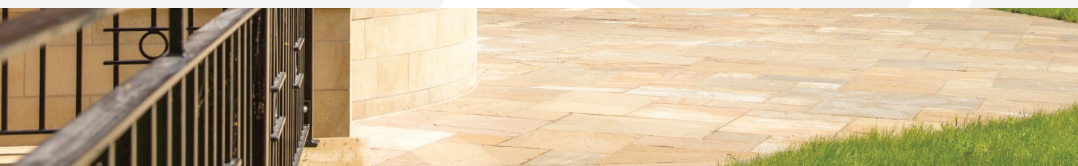
The stone is extremely prestigious and in great demand within Spain. It has been used on many of the 5* hotels in Madrid along with some of the more impressive villas that are situated on the outskirts of the country's capital city.

API Vein is being specified throughout the UK on a regular basis and it is a suitable match for many Yorkshire and Derbyshire buff/beige sandstones.

The material is available as ashlar, cladding, architectural and landscape applications in various finishes from honed to bush hammered.

Stock is held in Huddersfield in section sizes 100mm x 100mm, 100mm x 140mm, 150mm x 140mm, 100mm x 215mm in various lengths and 50mm paving in 600mm gauge.

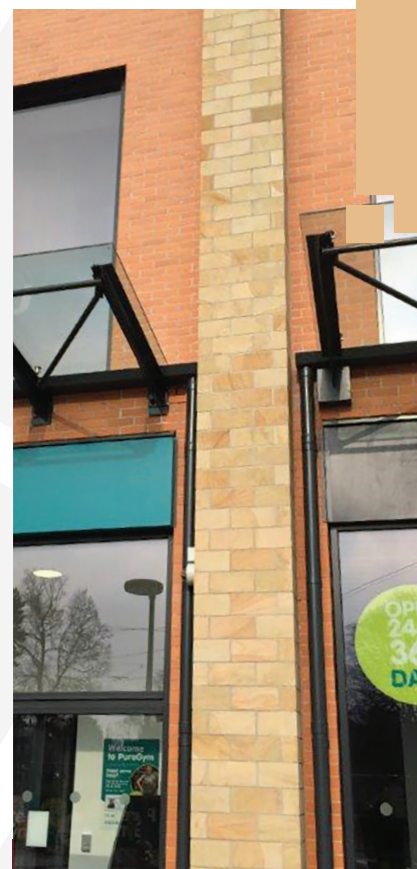
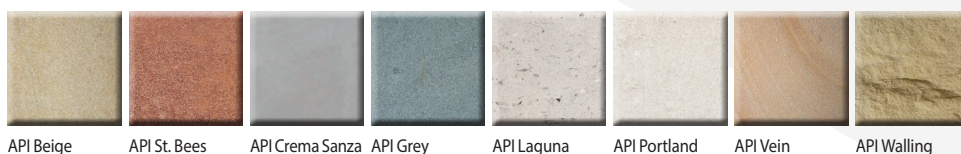
Extensive reserves are readily available and with blocks up to 3500mm long, large pieces are easily cut in one piece.



TECHNICAL DETAILS:

Geographical Type	Sandstone Subarcose
Main Colour	Cream based and Ochre colour
Colour Variations	Reddish veins
Texture	Fine Grain
Availability	Contract up to 100,000 m2
Average Block Size	2500L x 1500W x 1500H (mm)

ALSO AVAILABLE FROM API STONE:



CASE STUDY

*The Square at Beeston,
Nottinghamshire*

The Square forms part of the prime retail pitch within Beeston, which is Nottingham's largest suburban town.

Beeston is situated three miles south west of Nottingham city centre, the town itself is home to Nottingham University, the UK's most popular University.

The Nottingham Tram system runs through the centre of the retail site and the brief was to enhance the vibrancy of Beeston and bring a whole new shopping experience to the heart of the bustling town.

The main contractors for the development were Henry Boot Construction and B+K Building Services (Derby), and the main architects were Jefferson Sheard Architects (Sheffield).

API Stone's Quintanar Veta was selected ahead of numerous sandstones as it was deemed the stone that fitted with the vision and brief of the Beeston Town Planners.

The site was completed in October 2014.